

Strategy

Adopting a disciplined bottom-up approach to stock selection, the strategy draws on Fidelity's team of specialist Latin America equity investment professionals. The portfolio managers leverage a team of analysts focusing on the region. Following a fundamental research philosophy, they seek value that is underappreciated by the market. There is a distinct preference for companies that have dominant market positions, strong balance sheets and the potential to deliver and increase free cash flow for their shareholders. The investment universe is subjected to the rigours of the group's intense analysis, ensuring that portfolio holdings reflect only the highest conviction ideas. Sustainability analysis is integrated in the investment process but ESG risks do not necessarily prevent the managers from making an investment.

Objectives & Investment Policy

Objective: The fund aims to achieve capital growth over time.

Investment Policy: The fund invests at least 70% (and normally 75%) of its assets, in equities of companies that are listed, headquartered, or do most of their business in Latin America. Some of these investments may be from emerging markets. The fund may also invest in money market instruments on an ancillary basis.

Investment Process: In actively managing the fund, the Investment Manager considers growth and valuation metrics, company financials, return on capital, cash flows and other measures, as well as company management, industry economic conditions, and other factors. The Investment Manager takes into account Sustainability Risks in its investment process.

For more information, see "Sustainable Investing and ESG Integration".

Derivatives and Techniques: The fund may use derivatives for hedging and for efficient portfolio management.

Benchmark: MSCI EM Latin America Index. Used for: investment selection, risk monitoring and performance comparison.

Risk Factors

The use of financial derivative instruments may result in increased gains or losses within the fund. This fund invests in emerging markets which can be more volatile than other more developed markets. Liquidity is a measure of how easily an investment can be converted into cash. Under certain market conditions assets may be more difficult to value or sell at a desired price. This could affect the fund's ability to meet redemptions in a timely manner. Funds are subject to charges and expenses. Charges and expenses reduce the potential growth of your investment. This means you could get back less than you paid in. The costs may increase or decrease as a result of currency and exchange rate fluctuations. Please refer to the Prospectus and KID of the fund before making any final investment decisions. When referring to sustainability - related aspects of the promoted fund, the decision to invest should take into account all characteristics or objectives of the promoted fund as detailed in the Prospectus. Information on sustainability-related aspects is provided pursuant to SFDR at <https://www.fidelity.lu/sfdr-entity-disclosures>.

Fund Facts

Launch date: 09.05.94

Portfolio manager: Punam Sharma, Chris Tennant, Rob Pearce

Appointed to fund: 08.07.19, 15.04.21, 15.04.21

Years at Fidelity: 8, 13, 10

Fund size: \$ 408m

Number of positions in fund*: 42

Fund reference currency: US Dollar (USD)

Fund domicile: Luxembourg

Fund legal structure: SICAV

Management company: FIL Investment Management (Luxembourg) S.A.

Portfolio Turnover Cost (PTC): 0.03%

Portfolio Turnover Rate (PTR): 23.78%

Category: Regional - Equity - General

Share Class Facts

Other share classes may be available. Please refer to the prospectus for more details.

Launch date: 09.05.94

NAV price in share class currency: 33.38cpu

ISIN: LU0050427557

SEDOL: B2NTDF3

WKN: 973662

Bloomberg: FIDLLAI LX

Dealing cut-off: 15:00 UK time (normally 16:00 Central European Time)

Distribution type: Income

Distribution frequency: Annual

Ongoing Charges Figure (OCF) per year: 1.95% (30.04.23)

OCF takes into account annual management charge per year: 1.50%

TER: 1.94

Initial charge: Maximum 5.25%

Valuation point: Valued once a day (each Luxembourg business day). For relevant cut-off times please refer to your distributor.

Risk Indicator



The risk indicator assumes you keep the product for 5 years. The actual risk can vary significantly if you cash in at the early stage and you may get back less. The summary risk indicator is a guide to the level of risk of this product compared to other products. It shows how likely it is that the product will lose money because of movements in the markets or because we are not able to pay you. We have classified this product as 6 out of 7, which is a high risk class. This rates the potential losses from future performance at a high level, and poor market conditions are very likely to impact the capacity to pay you. Returns may increase or decrease as a result of currency fluctuations. This product does not include any protection from future market performance so you could lose some or all of your investment. If FIL Investment Management (Luxembourg) S.A. is not able to pay you what is owed, you could lose your entire investment.

Past performance does not predict future returns. The fund's returns may increase or decrease as a result of currency fluctuations. The investment which is promoted concerns the acquisition of units or shares in a fund, and not in a given underlying asset owned by the fund.

Performance Comparator(s)

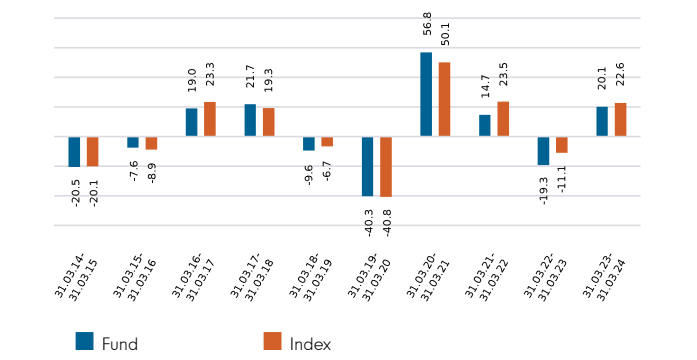
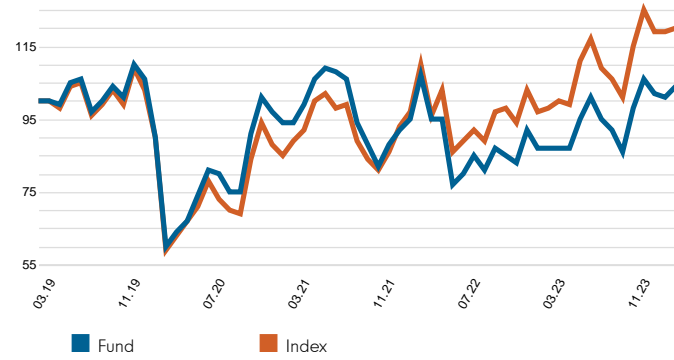
Peer Group Universe	Morningstar EAA Fund Latin America Equity
Market index from 01.04.16	MSCI Emerging Markets Latin America Index (Net)

Market index is for comparative purposes only unless specifically referenced in the Objectives & Investment Policy on page 1. The same index is used in the positioning tables on this factsheet.

Where the effective date for the current market index is after the share class launch date, full history is available from Fidelity.

Cumulative performance in USD (rebased to 100)

Performance for 12 month periods in USD (%)

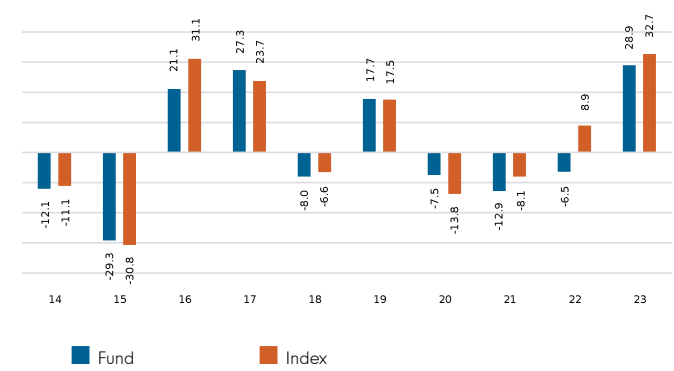


Performance is shown for the last five years (or since launch for funds launched within that period).

Performance for calendar years in USD (%)

Annual return in USD (%)

Highest annual return	115.26 (31.12.2009)
Lowest annual return	-56.14 (28.02.2009)



Performance to 31.03.24 in USD (%)

	1m	3m	YTD	1yr	3yr	5yr	Since 25.05.94*
Fund cumulative growth	3.2	-2.2	-2.2	20.1	11.2	4.1	327.2
Index cumulative growth	1.0	-4.0	-4.0	22.6	34.8	19.8	753.2
Fund annualised growth	-	-	-	20.1	3.6	0.8	5.0
Index annualised growth	-	-	-	22.6	10.5	3.7	7.4

Source of fund performance and volatility and risk measures is Fidelity. Performance is excluding initial charge.
 Basis: nav-nav with income reinvested, in USD, net of fees.
 Market indices are sourced from RIMES and other data is sourced from third-party providers such as Morningstar.
 *Performance commencement date.
 Performance is calculated for the portfolio. The individual investor performance may differ as a result of initial fees, the actual investment date, the date of reinvestment and dividend withholding tax.

Definition of terms:

- Annualised performance:** Annualised performance show longer term performance rescaled to a 1 year period. Annualised performance is the average return per year over the period. Actual annual figures are available to the investor on request.
- Equity:** the percentage of the fund that is currently invested in the equity market.
- Highest & Lowest return:** The highest and lowest returns for any 1 year over the period since inception have been shown.
- NAV:** The net asset value represents the assets of a Fund less its liabilities.
- Other:** the value of any non-equity investments (excluding cash funds) expressed as a percentage of fund TNA.
- Uninvested cash:** this is 100% minus the fund's Equity exposure and minus Other. This leaves any residual cash exposure that is not invested in shares or via derivatives.
- % TNA:** Data is presented as a percentage of TNA, which stands for Total Net Assets (the value of all the fund's assets after the deduction of any liabilities).

Sector/Industry Exposure (% TNA)

Sector GICS	Fund	Index	Relative
Financials	28.0	26.5	1.5
Materials	20.1	17.8	2.3
Industrials	14.7	10.3	4.4
Energy	12.6	13.0	-0.3
Consumer Staples	10.5	16.2	-5.7
Consumer Discretionary	5.8	2.0	3.9
Communication Services	2.0	4.1	-2.1
Health Care	1.9	1.4	0.5
Information Technology	1.9	0.5	1.4
Utilities	1.0	6.8	-5.9
Real Estate	0.9	1.3	-0.4
Total Sector Exposure	99.4	100.0	
Other Index / Unclassified	0.0	0.0	
Total Equity Exposure	99.4	100.0	

Market Capitalisation Exposure (% TNA)

USD	Fund	Index	Relative
>10bn	58.1	64.4	-6.3
5-10bn	17.5	18.3	-0.8
1-5bn	15.6	9.1	6.4
0-1bn	7.3	0.0	7.3
Total Market Cap Exposure	98.4	91.8	
Index / Unclassified	1.1	8.2	
Total Equity Exposure	99.4	100.0	

Geographic Exposure (% TNA)

	Fund	Index	Relative
Brazil	53.5	58.5	-5.1
Mexico	31.3	30.5	0.8
United States	5.3	0.5	4.8
Canada	5.1	0.0	5.1
Spain	2.0	0.0	2.0
Grand Cayman (UK Overseas Ter)	1.7	0.0	1.7
Zambia	0.4	0.0	0.4
Chile	0.0	5.4	-5.4
Peru	0.0	3.7	-3.7
Colombia	0.0	1.3	-1.3
Total Geographic Exposure	99.4	100.0	
Other Index / Unclassified	0.0	0.0	
Total Equity Exposure	99.4	100.0	

Regional Exposure (% TNA)

	Fund	Index	Relative
Latin America	86.6	99.5	-12.9
North America	10.5	0.5	9.9
Europe (Eurozone)	2.0	0.0	2.0
Sub-Saharan Africa	0.4	0.0	0.4
Total Regional Exposure	99.4	100.0	
Other Index / Unclassified	0.0	0.0	
Total Equity Exposure	99.4	100.0	

Top Positions (% TNA)

	Sector GICS	Geographic Location	Fund	Index	Relative
PETROLEO BRASILEIRO-PETROBRAS	Energy	Brazil	8.5	10.0	-1.5
GRUPO MEXICO SAB DE CV	Materials	Mexico	6.4	2.9	3.5
ITAU UNIBANCO HOLDING SA	Financials	Brazil	6.2	5.3	0.9
GRUPO FINANC BANORTE SAB DE CV	Financials	Mexico	5.0	4.3	0.7
WAL MART DE MEXICO SAB DE CV	Consumer Staples	Mexico	5.0	3.3	1.7
B3 SA BRASIL BOLSA BALCAO	Financials	Brazil	4.3	2.1	2.2
PRIO SA	Energy	Brazil	4.1	1.2	2.9
LUNDIN GOLD INC	Materials	Canada	3.5	0.0	3.5
VALE SA	Materials	Brazil	3.3	6.5	-3.2
LOCALIZA RENT A CAR SA	Industrials	Brazil	3.1	1.6	1.5

Top Overweight Positions (% TNA)

	Fund	Index	Relative
GRUPO MEXICO SAB DE CV	6.4	2.9	3.5
LUNDIN GOLD INC	3.5	0.0	3.5
PRIO SA	4.1	1.2	2.9
MERCADOLIBRE INC	2.6	0.0	2.6
NU HOLDINGS LTD/CAYMAN ISLANDS	2.4	0.0	2.4
B3 SA BRASIL BOLSA BALCAO	4.3	2.1	2.2
BANCO BILBAO VIZ ARGENTARIA SA	2.0	0.0	2.0
SANTOS BRASIL PARTICIPACOES SA	2.0	0.0	2.0
GRUPO AEROPORT DEL SUR SAB CV	2.6	0.9	1.8
PATRIA INVESTMENTS LTD	1.7	0.0	1.7

Top Underweight Positions (% TNA)

	Fund	Index	Relative
FOMENTO ECO MEX SAB DE CV	0.0	4.0	-4.0
VALE SA	3.3	6.5	-3.2
BANCO BRADESCO SA	0.0	3.0	-3.0
AMERICA MOVIL SAB DE CV	0.0	2.8	-2.8
CEMEX SAB DE CV	0.0	2.1	-2.1
WEG SA	0.0	2.0	-2.0
CENTRAIS ELETRICAS BRASILE SA	0.0	2.0	-2.0
AMBEV SA	0.0	1.8	-1.8
CREDICORP LTD	0.0	1.8	-1.8
ITAUSA SA	0.0	1.8	-1.8

Methodology: A position combines all equity investments (including derivatives) linked to an issuing company. Derivatives are included on an exposure basis so they reflect the equivalent underlying shares needed to generate the same return. Sector and geographic breakdown tables are calculated using the positions methodology.

Top Positions: those companies in which the largest percentages of the fund's total net assets are effectively invested. Positions in other funds - including ETFs (Exchange Traded Funds) - can appear in this table, but index derivatives form part of an "Other Index / Unclassified" category which will not appear.

Top Overweight & Underweight Positions: those positions which have the largest active weight relative to the index. Positions in other funds - including ETFs (Exchange Traded Funds) - can appear in this table, but index derivatives form part of an "Other Index / Unclassified" category which will not appear.

Manager

FIL Investment Management (Luxembourg) S.A.
2a, rue Albert Borschette, L-1246 Luxembourg
B.P. 2174
L-1021 Luxembourg

Custodian

Brown Brothers Harriman (Luxembourg) S.C.A.
2-8, avenue Charles de Gaulle
B.P. 403
L-2014 Luxembourg

Distribution

Frequency: Annual
Date / Amount: No dividend declared.

Representative Office

Prescient Management Company (RF) (Pty) Ltd,
Registration number: 2002/022560/07
Physical address: Prescient House, Westlake Business Park, Otto Close, Westlake, 7945
Postal address: PO Box 31142, Tokai, 7966
Telephone number: 0800 111 899
E-mail address: info@prescient.co.za
Website: www.prescient.co.za

Asset Allocation

	31/03/2024	31/12/2023	Exposure (% TNA)
Equity	99.4		98.0
Other	0.0		0.0
Uninvested Cash	0.6		2.0

Ongoing charges

The ongoing charges figure represents the charges taken from the fund over a year. It is calculated at the fund's financial year end and may vary from year to year. For classes of funds with fixed ongoing charges, this may not vary from year to year. For new classes of funds or classes undergoing corporate actions (eg amendment to annual management charge), the ongoing charges figure is estimated until the criteria are met for an actual ongoing charges figure to be published. The types of charges included in the ongoing charges figure are management fees, administration fees, custodian and depository fees and transaction charges, shareholder reporting costs, regulatory registration fees, Directors fees (where applicable) and bank charges. It excludes: performance fees (where applicable); portfolio transaction costs, except in the case of an entry/exit charge paid by the fund when buying or selling units in another collective investment undertaking. For more information about charges (including details of the fund's financial year end), please consult the charges section in the most recent Prospectus.

Historic yield

The historic yield for a fund is based on its dividends declared over the preceding 12 months. It is calculated by summing the dividend rates declared in that period, divided by the price as at the date of publication. Declared dividends may not be confirmed and may be subject to change. Where 12 months of declared dividend data does not exist a historic yield will not be published.

Mandatory Disclosures

- a. Collective investment schemes are generally medium to long-term investments;
- b. The value of participatory interests or the investment may go down as well as up;
- c. Past performance is not necessarily a guide to future performance;
- d. Collective investment schemes are traded at ruling prices and can engage in borrowing and scrip lending;
- e. A schedule of fees and charges and maximum commissions is available on request from the management company;
- f. The management company does not provide any guarantee either with respect to the capital or the return of a portfolio;
- g. The management company has a right to close the portfolio to new investors in order to manage it more efficiently in accordance with its mandate.

Fidelity International refers to the group of companies which form the global investment management organisation that provides information on products and services in designated jurisdictions outside of North America. Fidelity only offers information on its own products and services and does not provide investment advice based on individual circumstances, other than when specifically stipulated by an appropriately authorised firm, in a formal communication with the client. This communication is not directed at, and must not be acted upon by persons inside the United States and is otherwise only directed at persons residing in jurisdictions where the relevant funds are authorised for distribution or where no such authorisation is required. Unless otherwise stated, all views are those of Fidelity. Reference in this document to specific securities or funds should not be construed as a recommendation to buy or sell them, but is included for the purposes of illustration only. Investors should also note that the views expressed may no longer be current and may have already been acted upon by Fidelity. The research and analysis used in this documentation is gathered by Fidelity for its use as an investment manager and may have already been acted upon for its own purposes. Past performance is not a reliable indicator of future results. The value of investments can go down as well as up and you may get back less than you invested. Fidelity, Fidelity International, the Fidelity International logo and F symbol are trademarks of FIL Limited.

This fund is managed by FIL Investment Management (Luxembourg) S.A. For more information, please consult the Prospectus and latest Reports and Accounts which can be obtained free of charge in English and other main languages from FIL Investment Management (Luxembourg) S.A., the distributors or online at any time. The Net Asset Values per Share are available at the registered office of Fidelity Funds (the 'UCITS'). They are also published online daily at www.fidelityinternational.com where other information is available. This document describes a sub-fund and share class of the UCITS. The Prospectus and Reports and Accounts are prepared for the entire UCITS.

Country in which this fund is authorised: Luxembourg. The Supervisory Authority is: Commission de Surveillance du Secteur Financier.
Country in which FIL Investment Management (Luxembourg) S.A. is authorised: Luxembourg. The Supervisory Authority is: Commission de Surveillance du Secteur Financier.

Disclaimer

Collective Investment Schemes in Securities (CIS) should be considered as medium to long-term investments. The value may go up as well as down and past performance is not necessarily a guide to future performance. CIS's are traded at the ruling price and can engage in scrip lending and borrowing. The collective investment scheme may borrow up to 10% of the market value of the portfolio to bridge insufficient liquidity. A schedule of fees, charges and maximum commissions is available on request from the Manager. There is no guarantee in respect of capital or returns in a portfolio. A CIS may be closed to new investors in order for it to be managed more efficiently in accordance with its mandate. CIS prices are calculated on a net asset basis, which is the total value of all the assets in the portfolio including any income accruals and less any permissible deductions (brokerage, STT, VAT, auditor's fees, bank charges, trustee and custodian fees and the annual management fee) from the portfolio divided by the number of participatory interests (units) in issue. Forward pricing is used. The Fund's Total Expense Ratio (TER) reflects the percentage of the average Net Asset Value (NAV) of the portfolio that was incurred as charges, levies and fees related to the management of the portfolio. A higher TER does not necessarily imply a poor return, nor does a low TER imply a good return. The current TER cannot be regarded as an indication of future TER's. During the phase in period TER's do not include information gathered over a full year. Transaction Costs (TC) is the percentage of the value of the Fund incurred as costs relating to the buying and selling of the Fund's underlying assets. Transaction costs are a necessary cost in administering the Fund and impacts Fund returns. It should not be considered in isolation as returns may be impacted by many other factors over time including market returns, the type of Fund, investment decisions of the investment manager and the TER.

The Manager retains full legal responsibility for any third-party-named portfolio. Where foreign securities are included in a portfolio there may be potential constraints on liquidity and the repatriation of funds, macroeconomic risks, political risks, foreign exchange risks, tax risks, settlement risks, and potential limitations on the availability of market information. The investor acknowledges the inherent risk associated with the selected investments and that there are no guarantees.

Performance has been calculated using net NAV to NAV numbers with income reinvested. The performance for each period shown reflects the return for investors who have been fully invested for that period. Individual investor performance may differ as a result of initial fees, the actual investment date, the date of reinvestments and dividend withholding tax. Full performance calculations are available from the manager on request.

For any additional information such as fund prices, brochures and application forms please go to www.fidelityinternational.com.