

Strategy

The portfolio managers have a value investment style. Their bottom-up approach focuses on determining the intrinsic value of a company rather than themes. Their starting point is to identify intrinsic value at market extremes and a valuation approach is central to the process. They search for quality business models / management teams that are out of favour due to short-term macro factors. This, combined with a long-term investment horizon, gives them the ability to identify stocks that are undervalued, but should be beneficiaries of China's structural growth dynamics. The managers will put management on their radar screen for a couple of months and will meet with several members of the senior management team before investing. They also strictly evaluate a company's financial report.

Objectives & Investment Policy

- The fund aims to provide long-term capital growth with the level of income expected to be low.
- The fund will invest at least 70% in the shares of Chinese companies listed in China and Hong Kong as well as non-Chinese companies that have a significant portion of their activities in China.
- China is considered to be an emerging market.
- The fund has the freedom to invest outside its principal geographies, market sectors, industries or asset classes.
- The fund will invest up to 60% directly and/or indirectly in onshore China A and B Shares on an aggregated basis.
- The fund may invest in assets directly or achieve exposure indirectly through other eligible means including derivatives. The fund can use derivatives with the aim of risk or cost reduction or to generate additional capital or income, including for investment purposes, in line with the fund's risk profile.
- The fund is actively managed. The Investment Manager will, when selecting investments for the fund and for the purposes of monitoring risk, reference MSCI China Capped 10% Index (Net) (the "Index"). The fund's performance can be assessed against its Index. The Investment Manager has a wide range of discretion relative to the Index. While the fund will hold assets that are components of the Index, it may also invest in companies, countries or sectors that are not included in, and that have different weightings from, the Index in order to take advantage of investment opportunities.
- Income earned by the fund is reinvested in additional shares or paid to shareholders on request.
- Shares can usually be bought and sold each business day of the fund.

The portfolio has adhered to its policy objective.

Risk Factors

The use of financial derivative instruments may result in increased gains or losses within the fund. This fund invests in emerging markets which can be more volatile than other more developed markets. Liquidity is a measure of how easily an investment can be converted into cash. Under certain market conditions assets may be difficult to sell.

Fund Facts

Launch date: 18.08.03
Portfolio manager: Jing Ning, Alice Li
Appointed to fund: 01.11.13, 01.08.21
Years at Fidelity: 8, 3
Fund size: \$2,189m
Number of positions in fund: 65
Fund reference currency: US Dollar (USD)
Fund domicile: Luxembourg
Fund legal structure: SICAV
Management company: FIL Investment Management (Luxembourg) S.A.
Portfolio Turnover Cost (PTC): 0.06%
Portfolio Turnover Rate (PTR): -7.85%
Category: Regional - Equity - General

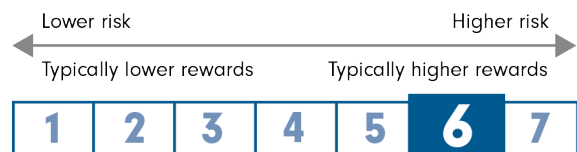
Share Class Facts

Other share classes may be available. Please refer to the prospectus for more details.

Launch date: 18.08.03
NAV price in share class currency: 68.98cpu
ISIN: LU0173614495
SEDOL: 7677645
WKN: A0CA6V
Bloomberg: FIDFDF0 LX
Dealing cut-off: 12:00 UK time (normally 13:00 Central European Time)
Distribution type: Income
Distribution frequency: Annual
Ongoing Charges Figure (OCF) per year: 1.91% (30.04.21)
OCF takes into account annual management charge per year: 1.50%
TER: 1.91
Initial charge: Maximum 5.25%
Valuation point: Valued once a day (each Luxembourg business day). For relevant cut-off times please refer to your distributor.

Share Class Risk and Reward Profile

This risk indicator is taken from the key information document at the relevant month-end. Because it may be updated during a month, please refer to the key information document for the most up-to-date information.



- The risk category was calculated using historical performance data.
- The risk category may not be a reliable indication of the future risk profile of the fund, is not guaranteed and may change over time.
- The lowest category does not mean a "risk free" investment.
- The risk and reward profile is classified by the level of historical fluctuation of the Net Asset Values of the share class, and within this classification, categories 1-2 indicate a low level of historical fluctuations, 3-5 a medium level and 6-7 a high level.

CHINA FOCUS FUND A-USD

30 SEPTEMBER 2021

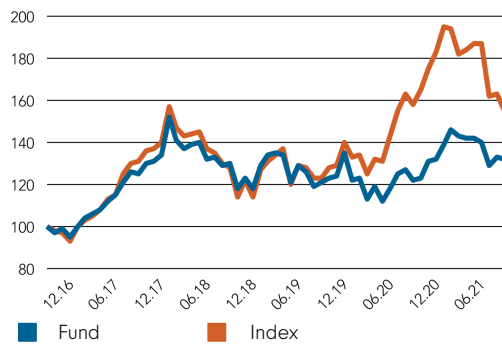
Past performance is not a reliable indicator of future results. The fund's returns can be affected by fluctuations in currency exchange rates.

Performance Comparator(s)

Peer Group Universe	Morningstar EAA Fund China Equity
Market index from 01.02.08	MSCI China Capped 10% Index (Net)

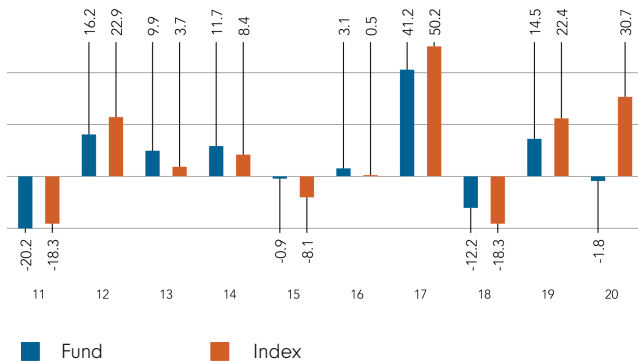
Market index is for comparative purposes only unless specifically referenced in the Objectives & Investment Policy on page 1. The same index is used in the positioning tables on this factsheet. Where the effective date for the current market index is after the share class launch date, full history is available from Fidelity.

Cumulative performance in USD (rebased to 100)



Performance is shown for the last five years (or since launch for funds launched within that period).

Performance for calendar years in USD (%)



Performance to 30.09.21 in USD (%)

	1m	3m	YTD	1yr	3yr	5yr	Since 18.08.03*
Fund cumulative growth	-0.1	-5.2	0.2	8.9	1.5	32.5	650.4
Index cumulative growth	-4.8	-17.1	-15.3	-1.7	20.8	55.2	675.0
Fund annualised growth	-	-	-	8.9	0.5	5.8	11.8
Index annualised growth	-	-	-	-1.7	6.5	9.2	12.0

Source of fund performance and volatility and risk measures is Fidelity. Performance is excluding initial charge.

Basis: nav-nav with income reinvested, in USD, net of fees.

Market indices are sourced from RIMES and other data is sourced from third-party providers such as Morningstar.

*Performance commencement date.

Performance is calculated for the portfolio. The individual investor performance may differ as a result of initial fees, the actual investment date, the date of reinvestment and dividend withholding tax.

Definition of terms:

Annualised performance: Annualised performance show longer term performance rescaled to a 1 year period. Annualised performance is the average return per year over the period. Actual annual figures are available to the investor on request.

Equity: the percentage of the fund that is currently invested in the equity market.

Highest & Lowest return: The highest and lowest returns for any 1 year over the period since inception have been shown.

NAV: The net asset value represents the assets of a Fund less its liabilities.

Other: the value of any non-equity investments (excluding cash funds) expressed as a percentage of fund TNA.

Uninvested cash: this is 100% minus the fund's Equity exposure and minus Other. This leaves any residual cash exposure that is not invested in shares or via derivatives.

% TNA: Data is presented as a percentage of TNA, which stands for Total Net Assets (the value of all the fund's assets after the deduction of any liabilities).

CHINA FOCUS FUND A-USD

30 SEPTEMBER 2021

Sector/Industry Exposure (% TNA)

GICS Sector	Fund	Index	Relative
Financials	23.9	14.5	9.4
Communication Services	16.6	15.0	1.6
Consumer Discretionary	11.2	31.6	-20.4
Energy	11.1	1.7	9.4
Materials	6.4	3.4	3.0
Industrials	6.2	5.4	0.9
Real Estate	6.0	4.6	1.4
Information Technology	5.9	7.1	-1.3
Consumer Staples	3.3	5.4	-2.1
Health Care	3.3	8.7	-5.4
Utilities	1.7	2.7	-0.9
Total Sector Exposure	95.5	100.0	
Other Index / Unclassified	0.0	0.0	
Total Equity Exposure	95.5	100.0	

Market Capitalisation Exposure (% TNA)

USD	Fund	Index	Relative
>10bn	65.5	75.7	-10.1
5-10bn	6.1	12.1	-6.0
1-5bn	17.9	5.9	12.0
0-1bn	5.3	0.1	5.3
Total Market Cap Exposure	94.8	93.7	
Index / Unclassified	0.7	6.3	
Total Equity Exposure	95.5	100.0	

Geographic Exposure (% TNA)

	Fund	Index	Relative
China	94.5	99.2	-4.7
Hong Kong	1.0	0.8	0.2

Total Geographic Exposure	95.5	100.0
Other Index / Unclassified	0.0	0.0
Total Equity Exposure	95.5	100.0

Top Positions (% TNA)

	GICS Sector	Geographic Location	Fund	Index	Relative
CHINA MOBILE LTD	Communication Services	China	6.0	0.0	6.0
CHINA LIFE INSURANCE CO LTD	Financials	China	5.7	0.5	5.2
CHINA CONSTRUCTION BANK	Financials	China	5.5	2.7	2.8
TENCENT HLDGS LTD	Communication Services	China	4.9	9.9	-5.0
CNOOC LTD	Energy	China	4.5	0.0	4.5
ALIBABA GROUP HOLDING LTD	Consumer Discretionary	China	4.4	9.6	-5.1
LENOVO GROUP LTD	Information Technology	China	4.4	0.3	4.1
INDUSTRIAL & COML BK CHINA	Financials	China	3.8	1.3	2.5
DONGFENG MOTOR GROUP CO LTD	Consumer Discretionary	China	3.5	0.1	3.4
BAIDU INC	Communication Services	China	3.5	1.7	1.8

Top Overweight Positions (% TNA)

	Fund	Index	Relative
CHINA MOBILE LTD	6.0	0.0	6.0
CHINA LIFE INSURANCE CO LTD	5.7	0.5	5.2
CNOOC LTD	4.5	0.0	4.5
LENOVO GROUP LTD	4.4	0.3	4.1
DONGFENG MOTOR GROUP CO LTD	3.5	0.1	3.4
CHINA CONSTRUCTION BANK	5.5	2.7	2.8
INDUSTRIAL & COML BK CHINA	3.8	1.3	2.5
CHINA RES LD LTD	3.0	0.5	2.5
CHINA OVERSEAS LAND & INV LTD	2.7	0.3	2.3
AGRICULTURAL BANK CHINA	2.5	0.4	2.1

Top Underweight Positions (% TNA)

	Fund	Index	Relative
ALIBABA GROUP HOLDING LTD	4.4	9.6	-5.1
MEITUAN	0.0	5.0	-5.0
TENCENT HLDGS LTD	4.9	9.9	-5.0
JD.COM INC	0.0	2.5	-2.5
WUXI BIOLOGICS (CAYMAN) INC	0.0	2.3	-2.3
NIO INC	0.0	1.9	-1.9
PING AN INS GROUP CO CHINA LTD	0.0	1.9	-1.9
PINDUODUO INC	0.0	1.6	-1.6
XIAOMI CORP	0.0	1.5	-1.5
NETEASE INC	0.0	1.3	-1.3

Methodology: A position combines all equity investments (including derivatives) linked to an issuing company. Derivatives are included on an exposure basis so they reflect the equivalent underlying shares needed to generate the same return. Sector and geographic breakdown tables are calculated using the positions methodology.

Top Positions: those companies in which the largest percentages of the fund's total net assets are effectively invested. Positions in other funds - including ETFs (Exchange Traded Funds) - can appear in this table, but index derivatives form part of an "Other Index / Unclassified" category which will not appear.

Top Overweight & Underweight Positions: those positions which have the largest active weight relative to the index. Positions in other funds - including ETFs (Exchange Traded Funds) - can appear in this table, but index derivatives form part of an "Other Index / Unclassified" category which will not appear.

CHINA FOCUS FUND A-USD

30 SEPTEMBER 2021

Manager

FIL Investment Management (Luxembourg) S.A.
2a, rue Albert Borschette, L-1246 Luxembourg
B.P. 2174
L-1021 Luxembourg

Custodian

Brown Brothers Harriman (Luxembourg) S.C.A
2-8, avenue Charles de Gaulle
B.P. 403
L-2014 Luxembourg

Distribution

Frequency: Annual
Date / Amount: 03-AUG-20 \$0.9131

Representative Office

Prescient Management Company (RF) (Pty) Ltd,
Registration number: 2002/022560/07
Physical address: Prescient House, Westlake Business Park, Otto Close, Westlake, 7945
Postal address: PO Box 31142, Tokai, 7966
Telephone number: 0800 111 899
E-mail address: info@prescient.co.za
Website: www.prescient.co.za

Asset Allocation

	30/09/2021	31/08/2021
Equity	95.5	96.3
Other	0.0	0.0
Uninvested Cash	4.5	3.7

Ongoing charges

The ongoing charges figure represents the charges taken from the fund over a year. It is calculated at the fund's financial year end and may vary from year to year. For classes of funds with fixed ongoing charges, this may not vary from year to year. For new classes of funds or classes undergoing corporate actions (eg amendment to annual management charge), the ongoing charges figure is estimated until the criteria are met for an actual ongoing charges figure to be published. The types of charges included in the ongoing charges figure are management fees, administration fees, custodian and depositary fees and transaction charges, shareholder reporting costs, regulatory registration fees, Directors fees (where applicable) and bank charges. It excludes: performance fees (where applicable); portfolio transaction costs, except in the case of an entry/exit charge paid by the fund when buying or selling units in another collective investment undertaking. For more information about charges (including details of the fund's financial year end), please consult the charges section in the most recent Prospectus.

Historic yield

The historic yield for a fund is based on its dividends declared over the preceding 12 months. It is calculated by summing the dividend rates declared in that period, divided by the price as at the date of publication. Declared dividends may not be confirmed and may be subject to change. Where 12 months of declared dividend data does not exist a historic yield will not be published.

Mandatory Disclosures

- Collective investment schemes are generally medium to long-term investments;
- The value of participatory interests or the investment may go down as well as up;
- Past performance is not necessarily a guide to future performance;
- Collective investment schemes are traded at ruling prices and can engage in borrowing and scrip lending;
- A schedule of fees and charges and maximum commissions is available on request from the management company;
- The management company does not provide any guarantee either with respect to the capital or the return of a portfolio;
- The management company has a right to close the portfolio to new investors in order to manage it more efficiently in accordance with its mandate.

Fidelity International refers to the group of companies which form the global investment management organisation that provides information on products and services in designated jurisdictions outside of North America.

Fidelity only offers information on its own products and services and does not provide investment advice based on individual circumstances, other than when specifically stipulated by an appropriately authorised firm, in a formal communication with the client.

This communication is not directed at, and must not be acted upon by persons inside the United States and is otherwise only directed at persons residing in jurisdictions where the relevant funds are authorised for distribution or where no such authorisation is required.

Unless otherwise stated, all views are those of Fidelity.

Reference in this document to specific securities or funds should not be construed as a recommendation to buy or sell them, but is included for the purposes of illustration only.

Investors should also note that the views expressed may no longer be current and may have already been acted upon by Fidelity. The research and analysis used in this documentation is gathered by Fidelity for its use as an investment manager and may have already been acted upon for its own purposes.

Past performance is not a reliable indicator of future results. The value of investments can go down as well as up and you may get back less than you invested. Fidelity, Fidelity International, the Fidelity International logo and F symbol are trademarks of FIL Limited.

This fund is managed by FIL Investment Management (Luxembourg) S.A.

For more information, please consult the Prospectus and latest Reports and Accounts which can be obtained free of charge in English and other main languages from FIL Investment Management (Luxembourg) S.A., the distributors or online at any time.

The Net Asset Values per Share are available at the registered office of Fidelity Funds (the 'UCITS'). They are also published online daily at www.fidelityinternational.com where other information is available.

This document describes a sub-fund and share class of the UCITS. The Prospectus and Reports and Accounts are prepared for the entire UCITS.

Country in which this fund is authorised: Luxembourg. The Supervisory Authority is: Commission de Surveillance du Secteur Financier.

Country in which FIL Investment Management (Luxembourg) S.A. is authorised: Luxembourg. The Supervisory Authority is: Commission de Surveillance du Secteur Financier.

Disclaimer

Collective Investment Schemes in Securities (CIS) should be considered as medium to long-term investments. The value may go up as well as down and past performance is not necessarily a guide to future performance. CIS's are traded at the ruling price and can engage in scrip lending and borrowing. The collective investment scheme may borrow up to 10% of the market value of the portfolio to bridge insufficient liquidity. A schedule of fees, charges and maximum commissions is available on request from the Manager. There is no guarantee in respect of capital or returns in a portfolio. A CIS may be closed to new investors in order for it to be managed more efficiently in accordance with its mandate. CIS prices are calculated on a net asset basis, which is the total value of all the assets in the portfolio including any income accruals and less any permissible deductions (brokerage, STT, VAT, auditor's fees, bank charges, trustee and custodian fees and the annual management fee) from the portfolio divided by the number of participatory interests (units) in issue. Forward pricing is used. The Fund's Total Expense Ratio (TER) reflects the percentage of the average Net Asset Value (NAV) of the portfolio that was incurred as charges, levies and fees related to the management of the portfolio. A higher TER does not necessarily imply a poor return, nor does a low TER imply a good return. The current TER cannot be regarded as an indication of future TER's. During the phase in period TER's do not include information gathered over a full year. Transaction Costs (TC) is the percentage of the value of the Fund incurred as costs relating to the buying and selling of the Fund's underlying assets. Transaction costs are a necessary cost in administering the Fund and impacts Fund returns. It should not be considered in isolation as returns may be impacted by many other factors over time including market returns, the type of Fund, investment decisions of the investment manager and the TER.

The Manager retains full legal responsibility for any third-party-named portfolio. Where foreign securities are included in a portfolio there may be potential constraints on liquidity and the repatriation of funds, macroeconomic risks, political risks, foreign exchange risks, tax risks, settlement risks, and potential limitations on the availability of market information. The investor acknowledges the inherent risk associated with the selected investments and that there are no guarantees.

Performance has been calculated using net NAV to NAV numbers with income reinvested. The performance for each period shown reflects the return for investors who have been fully invested for that period. Individual investor performance may differ as a result of initial fees, the actual investment date, the date of reinvestments and dividend withholding tax. Full performance calculations are available from the manager on request.

For any additional information such as fund prices, brochures and application forms please go to www.fidelityinternational.com.

